

Resequencing Elucidates the Genetic Mechanism Underlying Elite Early-Maturing Potato Parent Kexin23

Yue Wang^{1,*}, Yunfei Gao², Qiao Wang^{1,2,+}, Bin Yan^{1,2,+}, Zhimin Niu^{1,2,+},

Xiangri Nan^{1,2,+}, Wanmin Sheng^{*} and Qingquan Li^{*}

¹ Institute of Industrial Crops of Heilongjiang Academy of Agricultural Sciences, Harbin 150086, China

² Institute of Industrial Crops of Heilongjiang Academy of Agricultural Sciences/Heilongjiang Key Laboratory for Potato Biology and Quality Improvement, Harbin 150086, China

^{*}corresponding. Wanmin Sheng, E-mail: shengwanmin@163.com

⁺these authors contributed equally to this work

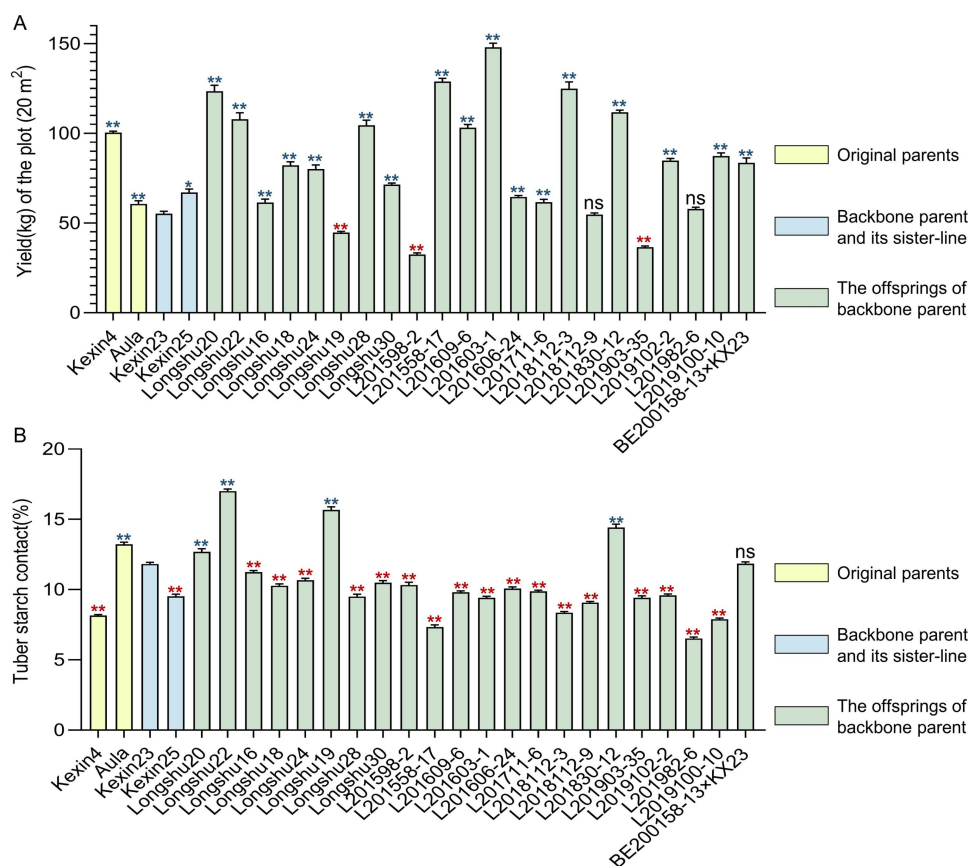


Figure S1. Statistical analysis of yield (A) and tuber starch content (B) in Kexin23 and its parents, sister lines, and offsprings.

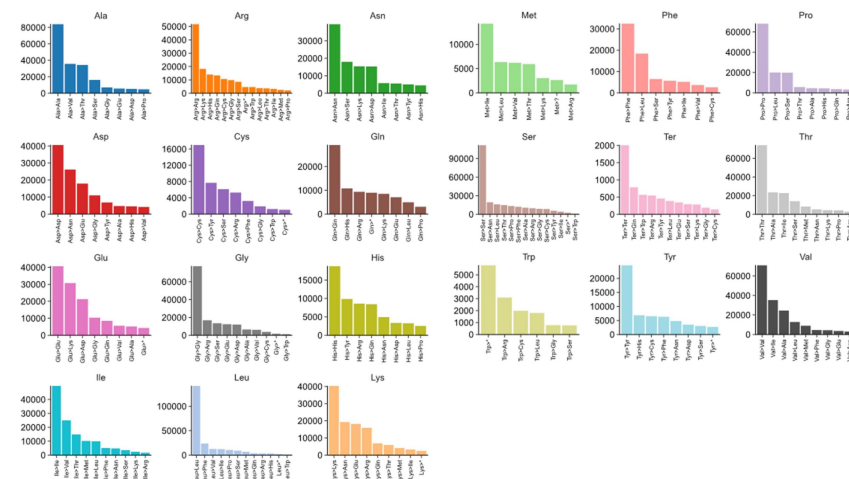


Figure S2. Statistics of amino acid substitutions.

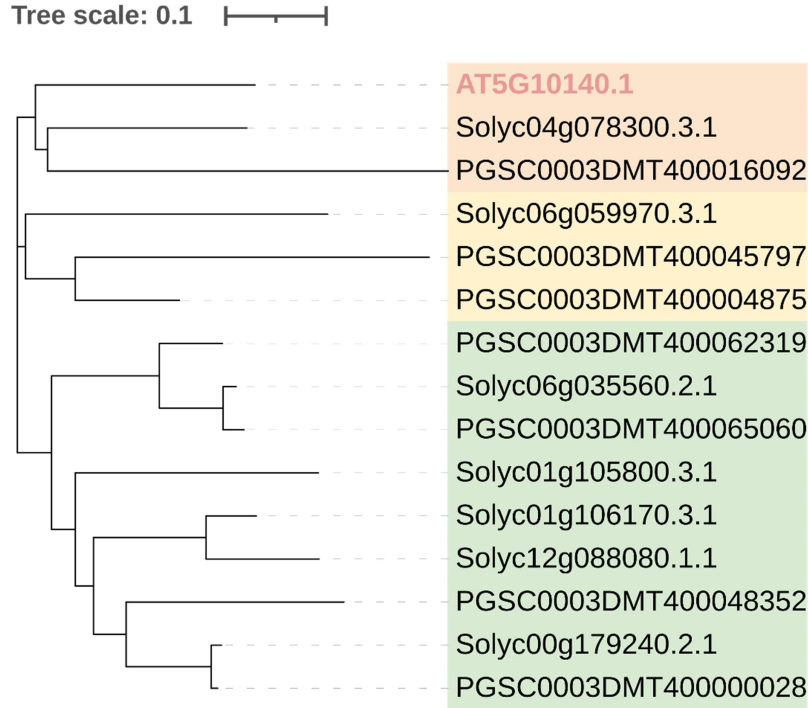


Figure S3. Phylogenetic tree of FLC.

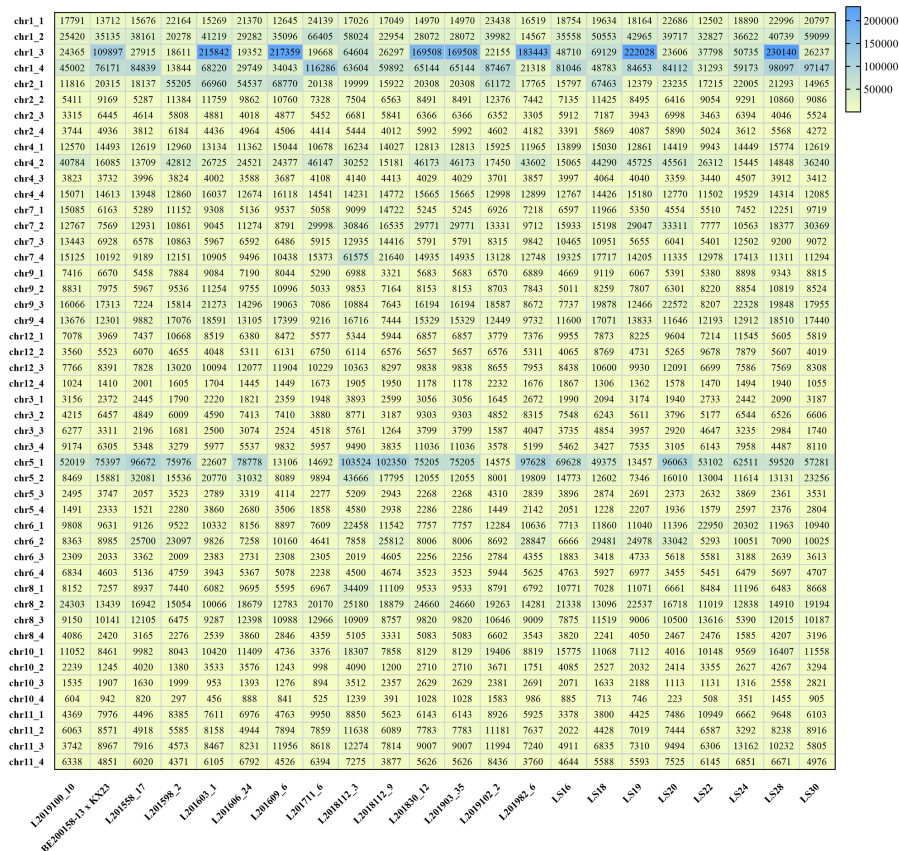


Figure S4. Number of SNPs inherited from Kexin23 by the offspring.